

## Highly flexible professional tripod TrioPod PRO75

The reinforced construction of the individual components makes the TrioPod PRO75 suitable for the heaviest photo and video equipment. The maximum load capacity is now 65 kg. Shown below in combination with the MagicBalance PRO75 leveling unit with 15° adjustment in any direction and one-hand operation with a locking lever.

NOVOFLEX offers Ø39mm tripod legs in carbon design especially for the large TrioPod PRO75 tripod base. In general, all legs from the TrioPod, TrioPod-M and QuadroPod series can be used, for example mini legs, if working close to the ground is required.



## Information

For more information, advice and tips about our products contact your photo dealer or the distributor of NOVOFLEX products in your country (have a look at the “Where to buy” section of our website to find your distributor) or visit our website [www.novoflex.com](http://www.novoflex.com).

For personal advice about possible accessories which are suitable for your NOVOFLEX product please contact the following phone number or send us an E-mail.

**NOVOFLEX Phone:** +49 8331 88888

**NOVOFLEX E-Mail:** [mail@novoflex.com](mailto:mail@novoflex.com)

© NOVOFLEX Präzisionstechnik GmbH  
Brahmsstraße 7  
D-87700 Memmingen  
Phone +49 8331 88888, Fax +49 8331 47174  
Email [mail@novoflex.com](mailto:mail@novoflex.com), Internet [www.novoflex.com](http://www.novoflex.com)  
Status 03/24



# Modular Goniometer Head QUBE

MANUAL



Illustration shows product variant QUBE-PRO

Congratulations on your purchase of the new goniometer head QUBE. Whilst you should have no difficulty in using your modular geared head, you may find the following explanations useful.

## Nomenclature

### PANORAMA=QC panning base (QUBE-PRO-Kit)

1	Clamping screw Q=Mount
2	Integrated quick release unit type Q=MOUNT for ARCA profile
3	Safety pin to prevent a clamping plate or QUBE from slipping out
4	Spirit level
5	Locking screw horizontal rotation
6	ARCA-compatible dovetail profile

### QUBE modular goniometer head base unit

7	Fine adjustment knob
8	ARCA-compatible dovetail profile
9	3/8"-16 mount with 1/4"-20 adapter for tripod connection
10	Safety pin catch
11	Integrated quick release unit type Q=MOUNT (ARCA-compatible)
12	Safety pin to prevent a clamping plate or QUBE from slipping out
13	Clamping screw Q=Mount
14	Angle scale +/-15°
15	Looking wheel

**Tip:** Blue rotary knobs (5 and 7) are used for angle adjustments, while gray rotary knobs (1 and 13) are used for clamping the unit above.

## Product variants

QUBE models are available in three distinct kits:

- QUBE: Modular Goniometer Head, Base model
- QUBE-DUO: Modular Goniometer Head, Duo kit consisting of two goniometer heads QUBE
- QUBE-PRO: Modular Goniometer Head, Pro kit consisting of two goniometer heads QUBE and panning base PANORAMA=QC

## Technical Data

Product	Weight	Dimensions	Max. load	Setting range
QUBE	456 g 1.005 lb	86 x 75 x 45 mm 3.39 x 2.95 x 1.77"	8 kg 17.6 lb	30°
QUBE-DUO	912 g 2.011 lb	86 x 86 x 85 mm 3.39 x 3.39 x 4.33"	8 kg 17.6 lb	30° / 30°
QUBE-PRO	1152 g 2.540 lb	86 x 86 x 115 mm 3.39 x 3.39 x 4.53"	8 kg 17.6 lb	30° / 30° / 360°

The rotation radius for the Base model QUBE is 95mm.

**Warning:** The goniometer head QUBE is designed for use in a temperature range of **-10°C to +60°C / 14°F to 140°F**. When used outdoors, special attention must be paid to ensure that no moisture or snow can penetrate the interior, especially during sub-zero temperatures. This could result in damage.

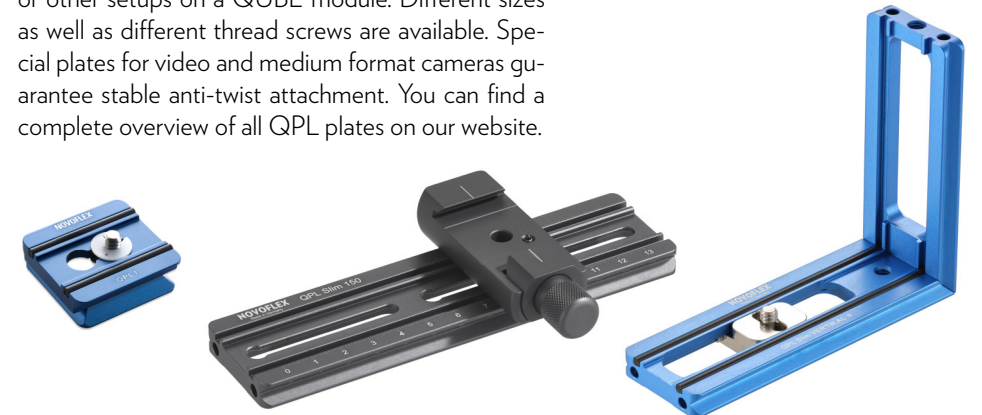
## Recommended accessories

### Fine adjustment handle CAST-FINE-K

By increasing the diameter of the fine adjustment knob (7) using the CAST-FINE-K fine adjustment handle, particularly small, precise angular movements can be achieved.

### QPL Clamping plates

Our QPL interchangeable plates with ARCA dovetail profile are suitable for mounting your camera or other setups on a QUBE module. Different sizes as well as different thread screws are available. Special plates for video and medium format cameras guarantee stable anti-twist attachment. You can find a complete overview of all QPL plates on our website.



# Application examples

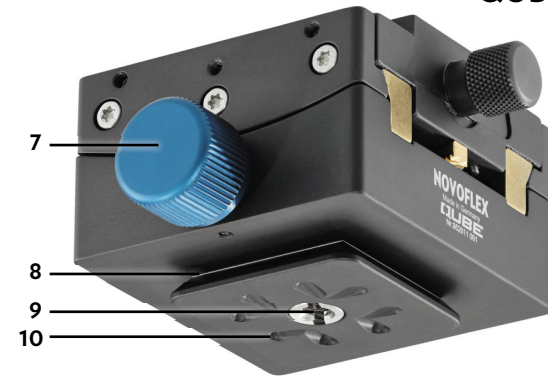


PANORAMA=QC



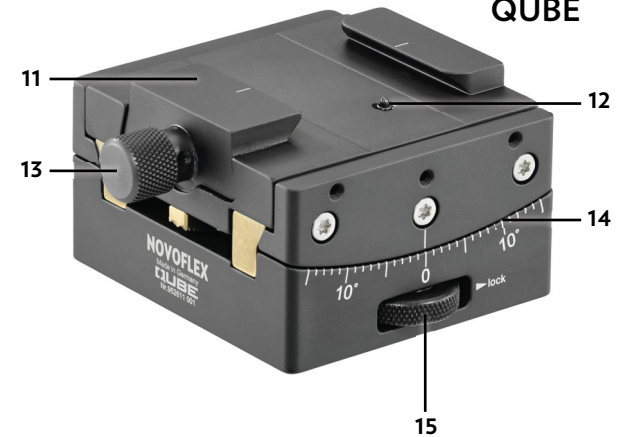
Panning base included in the QUBE-PRO Kit package

QUBE



Upper unit, identical to the lower unit, rotated horizontally 90°

QUBE



Lower unit

## Product description

With a goniometer head, the mounted device is pivoted around an axis that is located in space above the unit. Compared to a conventional tripod head, the center of gravity shifts downwards in relation to the pivot point, which makes the goniometric structure particularly stable and insensitive to vibration. The QUBE is therefore predestined for heavy and extensive setups, for example in macro and architectural photography. In addition, the modular system allows each axis to be adjusted separately.

Thanks to the ARCA-compatible dovetail profile (6 or 8) used on the underside, individual modules can be combined with existing devices such as ball heads, quick release units, focusing racks etc. Alternatively, a 3/8"-16 mount with 1/4"-20 adapter is available.

The upper QUBE module is also connected to the top of the lower module using this dovetail profile and the integrated quick-release coupling of type Q=MOUNT (11). The coupling features a safety pin (3 or 12) which prevents unintended detachment of the upper module or a NOVOFLEX clamp plate from the Q-system when the coupling screw is only partially open, thanks to a special cutout (10).

Movements in the range of +/-15° around the transverse or longitudinal axis can be carried out precisely using the fine adjustment knob (7). Angle positions are indicated on the angle scale (14) and can be fixed using the locking wheel (15)

The PANORAMA=QC panning base is used for rotation around the vertical axis. The spirit level (4) on the top can be used to assess leveling. The camera or other structures are mounted using the integrated quick release unit type Q=MOUNT (2) on top of the panning base.

All modules of the system can be combined in any order. For example, the PANORAMA=QC can be used at the bottom, in the middle or at the top (in the classic position).

## Mounting on a tripod

For mounting on a tripod, a square ARCA compatible dovetail profile (8) is available on the underside for corresponding quick release units or alternatively a 3/8"-16 mount with 1/4"-20 adapter (9). The silver adapter can be removed with a screwdriver if the larger 3/8"-16 mount is to be used.



## Connect modules

Open the lower coupling by turning the clamping screw (13) counterclockwise as far as it will go, insert the dovetail profile of the upper module (QUBE base unit or PANORAMA=QC panning base) into the middle of the coupling and turn the clamping screw clockwise until to the stop. Then, verify the secure connection.

## Operating

### Mounting the camera

Mount a clamping plate with ARCA-compatible dovetail profile underneath your camera. We recommend plates of the NOVOFLEX QPL series, which interact with the safety pin of the quick release unit (3). The pin prevents accidental slipping out if the clamping screw (1) is not fully tightened.

### Angle adjustment on the QUBE base module

Open the locking wheel (15) by turning it in the opposite direction to the marking "lock". Adjust the angle using the fine adjustment knob (7). You can read off the set angle on the angle scale (14). Fix this setting by turning the locking wheel as far as it will go in the direction of the "lock" marking.

### Adjust horizontal angle position

Open the blue locking screw of the panning base (5). Pan the camera horizontally while looking through the viewfinder until the desired angle position is reached. Now close the blue locking screw again. The panning base has a marking line in the upper part and an angle scale in the lower part, which are used to set certain angular positions reproducibly.

